



SF-2204 HVW

FOCUSING ON YOUR FUTURE

S P E C I F I C A T I O N S



The CMI Terex SF-2204 HVW is the utility sized machine in the world's only family of Hydraulic Variable Width Concrete Slipform Pavers.

Infinitely variable paving widths from 8'6" to 15'; optional widths to 20'.

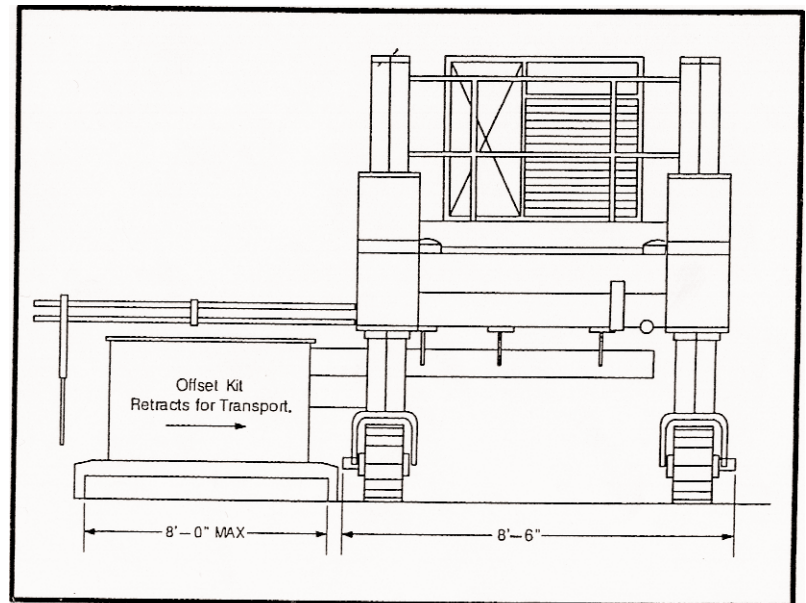
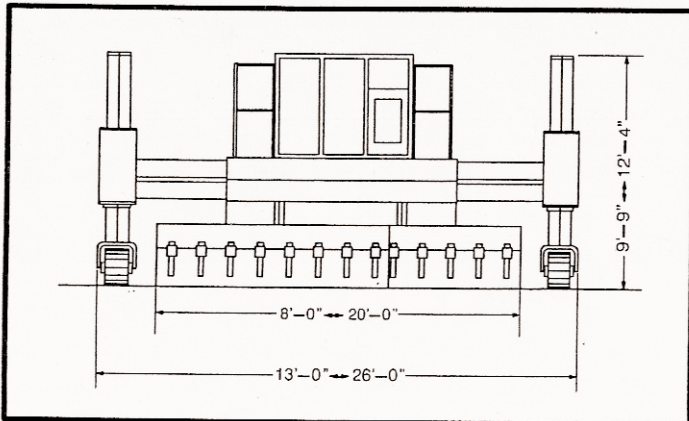
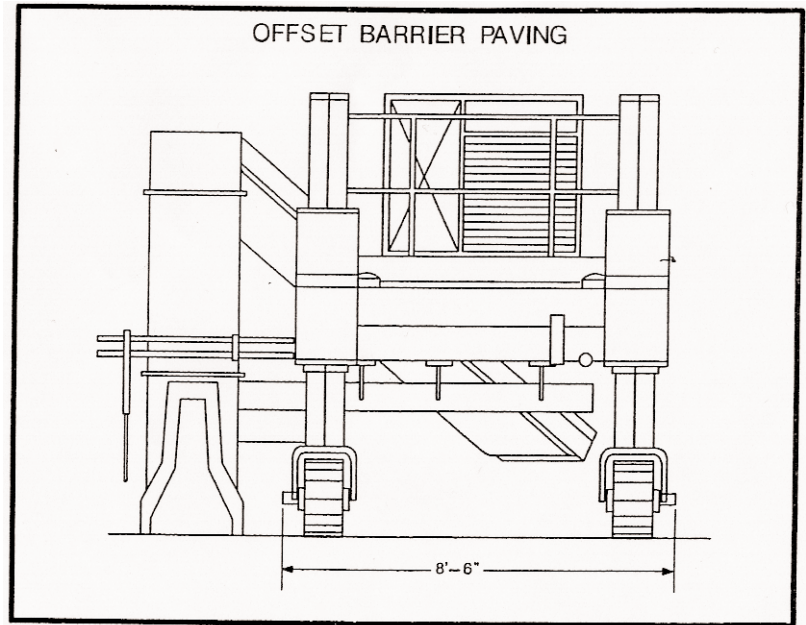
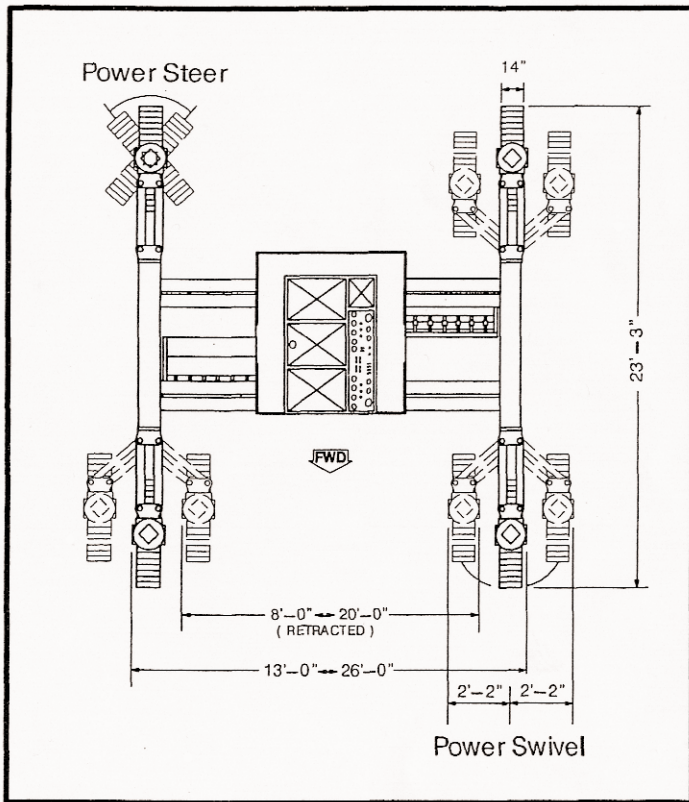


SF 2204 HVW TECHNICAL SPECIFICATIONS

ITEM #		TRACTOR DATA	DETAILS	
1	Power Supply			
	*Engine	CAT 3126B ATAAC		
	Power Rated (HP/PS/kW)		240 HP	
	Governed RPM		2200 rpm	
	Fuel Consumption (g/l)		13 gph	
	Sound Attenuated	Standard	Engine enclosed	
	Air Compressor	Standard	13 CFM/125 PSI	
	*Hydraulic Power			
	Pump Drive	3-Port Planetary		
	Nos. Pumps	5	Hydrostatic	
	Filtration	Canister type	10 micron pressure 20 micron return	
2	Mainframe			
	*Design	Tubular beam		
	Construction	High Tensile Strength	SAE 1518	
	Hydraulic Telescoping	Dual stage	Both sides up to 6 ft. each side	
3	Tracks & Legs			
	Track Dimensions		5 ft.-3 in. long x 13.8 in. wide	
	Track Drive	2-speed	Auxiliary overdrive	
	Speed Paving/Travel		0-22/0-65 fpm	
	Leg Column Stroke	Hydraulic	35.4 in.	
	Leg & Track Swivel	4 track LH/RH	51.2 in. range	
	Track Steering	4 track	35° LH/RH	
	Crab and Coordinated Steering	4 track	Standard	
4	Sensor System			
	Elevation & Steering	CMI HYDRA-MATION®	Proportional-hydraulic	
	Cross-Slope Sensor	Electric/Hydraulic	Proportional/electric	
	Emergency Stop Stations	5 locations	1 console/1 @ each leg	
5	Operators Station			
	Engine Control	Keyed lockout	Standard	
	Engine Protection System	High temp/Low pressure	Standard	
	Operation Controls		Enclosure	
	Vandalism Cover	Standard	Lockable	
	Sun Canopy	Folding	Standard	
6	Vibration System			
	Base Machine	Hydraulic	5 - standard	
	Optional Capacity	(up to)	15 - maximum	
	Individual Control (min/max)	Flow control	Standard each vibrator	
	Vibration Monitor /Data Collection	Available	Optional	
7	Fluid Capacity			
	Fuel	Diesel	79 gal	
	Hydraulic	Exxon Univas N-46	105 gal	
	Engine Coolant	Radiator	4 gal	
	Utility Water	Washdown	21 gal	
	Auxiliary Cleaning Fluid	Standard	13 gal	
	High Pressure Washdown	Standard	up to 2500 Psi	
8	Transport Data			
	Transport Weight With NVW		Up to 53,000 lbs	
	Minimum Width		8 ft.-6 in.	
	Height		10 ft.	
	Length		24 ft.	
9	Standard Paving System			
Variable Width Paving System	Hydraulic	8 ft.-15 ft. width (opt. to 20 ft.)		
10	Optional Equipment			
	* Engine Option		Consult factory	
	* Electronic Vibration Monitor		Consult factory	
	* Alternate Paving Systems		Available	
	* Expandable Mould System	Hydraulic	4 ft.-12 ft. width	
	* Side Kit Curbing Systems		Consult factory	



2000 Series Paving Kit Arrangements



All dimensions shown are approximate measurements.



P.O. Box 1985
Oklahoma City, OK 73101
Ph. 405/787-6020 • Fax 05/491-2417
www.terexrb.com

2000 Series Paving Kit Arrangements

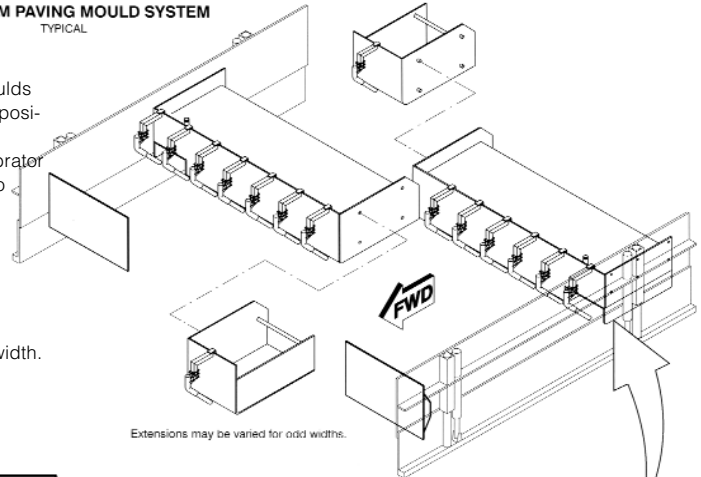
HYDRAULIC VARIABLE WIDTH PAVING SYSTEM

TANDEM PROFILE MOULDS contained within modular side form arrangement. Moulds mounted to tractor sub-frame system permitting mainframe telescoping action to reposition moulds laterally for wider/narrower paving width requirements. Transition to wider/narrower paving width is stepless, requiring only momentary disruption for vibrator positioning. Complete with hydraulic guillotine-type side forms, vertical stroke up to 30CM, two basic mould elements, and provisions for curb profile inserts to construct integral curbs.

- SF-2204 Basic two Tandem Mould Elements 8-15 ft. paving width. Optional extensions to provide up to 20 ft. paving width. Up to 15 each hydraulic vibrator capacity.
- SF-2104 Basic two Tandem Mould Elements 6-10.5 ft., optional 6-12 ft. paving width. Up to 8 each hydraulic vibrator capacity.
- Consult CMI for special width requirements.

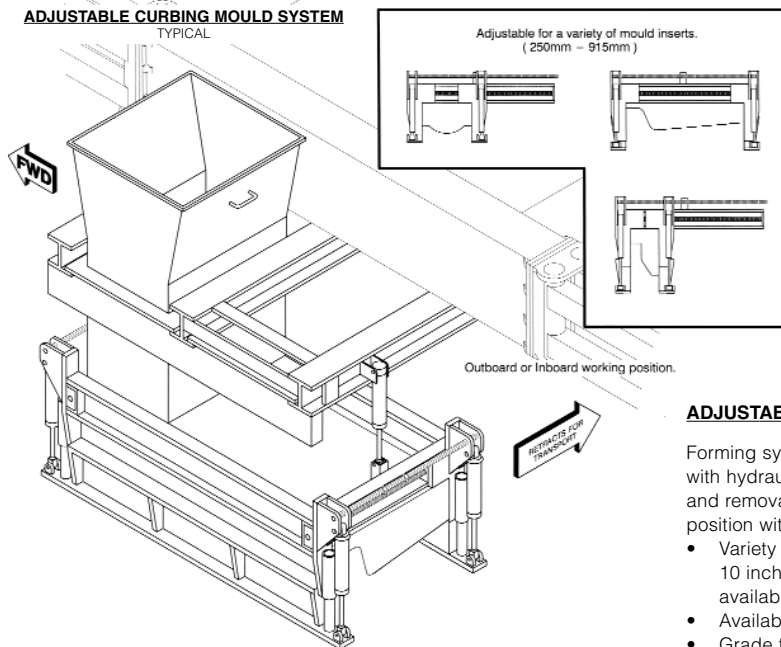
STEPLESS HYDRAULIC VARIABLE WIDTH TANDEM PAVING MOULD SYSTEM

TYPICAL



ADJUSTABLE CURBING MOULD SYSTEM

TYPICAL



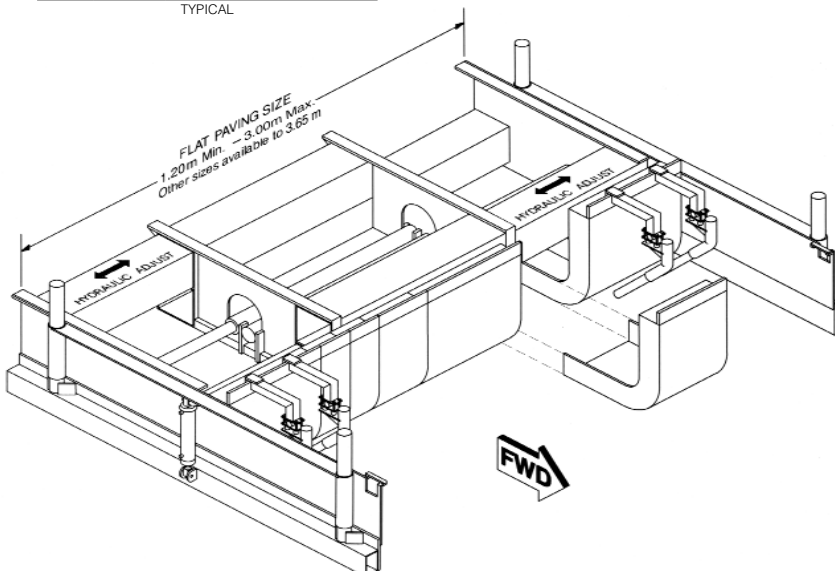
ADJUSTABLE CURBING MOULD SYSTEM (OPTIONAL)

Forming system provides containment/clamping of profile mould inserts. Equipped with hydraulic guillotine-type side forms, mechanical mould clamping arrangement, and removable feed-hopper. Hydraulic vibrator are bulkhead mounted, adjustable for position within the concrete intake throat.

- Variety of mould inserts available to customer specifications: 10 inch base width to 36 inch max. width, 16 high curb. Other size arrangements available. Consult factory with specific requirements.
- Available as side kit arrangement or center mounted.
- Grade trimmer option available for simultaneous trim and pave operation (side kit arrangement only).

HYDRAULIC EXPANDABLE MOULD SYSTEM

TYPICAL



HYDRAULIC EXPANDABLE MOULD SYSTEM (OPTIONAL)

Adjustable flat paving open mould, side mount and center mount sub-frame. Hydraulic telescope permits open/close for installation of mould segments for paving width adjustment. System equipped with hydraulic powered guillotine-type side forms. Mould system complete with variety of inserts which added to base unit will provide flexibility for paving width adjustment. Available 4 ft. to 10 ft. or 5 ft. to 12 ft. sizes; integral curb capability standard. Consult factory for your specific requirements.